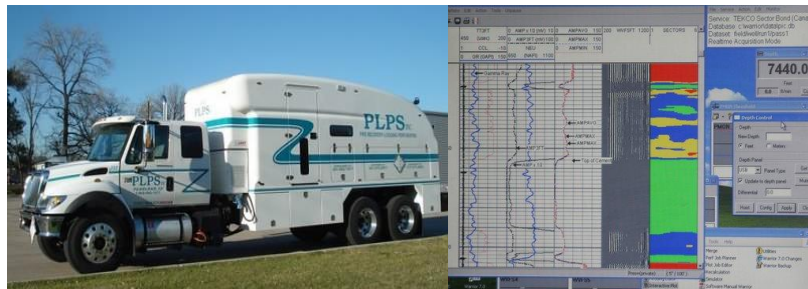


# PLPS

PIPE RECOVERY, LOGGING, PERFORATING SPECIALISTS  
866-992-7577



P.L.P.S.,inc is a complete provider of cased hole electric wireline services. We serve the Upper Texas Gulf Coast from our Pearland office and the Lower Texas Gulf Coast including the Eagle Ford Shale from our Victoria facility. Since 1995 PLPS has set the standard for independent wireline operators in our service areas, bringing digital and radial bond logging to standard practice. Please call us toll free to discuss your requirements, request a quotation or arrange for services.

## SERVICES & CAPABILITIES

### Logging services

- Gamma ray & gamma ray neutron logging
  - ◊ Shoot-thru gamma ray 1 11/16" ~ 3 1/8"
- Cement bond logging
- Dual receiver & radial tools
- Production logging
- Temperature logging, absolute & differential
- Noise & noise/temperature logging
- Flow meters
- Collar logs
- High temperature logging: all tools rated 400°F. ~ 450°F.
- High pressure logging services to 15 KPSI
- All digital logging
- Log data archiving

### Perforating services

- Thru-tubing 1 3/8" to 2 1/8"
- Casing guns 3 1/8" to 6"
- High density perforating (6 to 12 shots/ft.)
- Magnetic orienting
- Retrievable tubing guns
- Retrievable expendable guns
- Expendable guns
- Circulation guns
- High temperature perforating: all tools rated 400°F. ~ 450°F.

### Pipe recovery services

- Free Point & Back-Off
  - ◊ 11/16" to 1 1/2" free point tools
- Chemical & jet cutters
- Casing & tubing cutters
- Stuck pipe log

### Plug & packer services

- Packer setting
- Cement retainer setting
- Bridge plugs
- Vented & non-vented plugs
- Magna range plugs
- Junk catcher
- Dump bailers

### Pump down perforating & logging

- Radial bond logs
- Plugs & select fire perforating

### Tubing conveyed perforating

### Other capabilities & services

- Inland marine service
  - ◊ Truck on barge
  - ◊ Skid units
- Crane trucks
- Sour well equipment
- High pressure grease injectors, 5 ~ 15 KPSI
- XpressPlot™ log plots emailable directly from job site